

# SSFA comparison

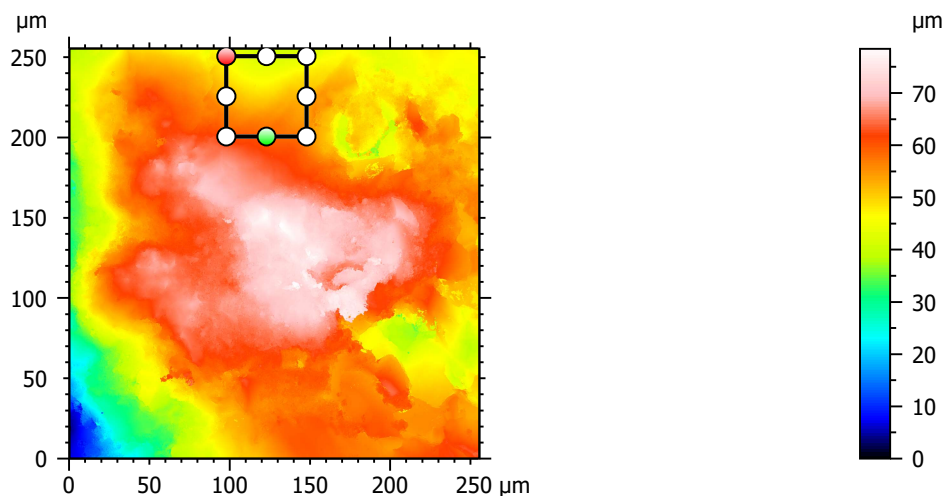
Template to process all lithic surfaces acquired with the Zeiss LSM 800 with the 50x/0.95 objective.

## A. Processing

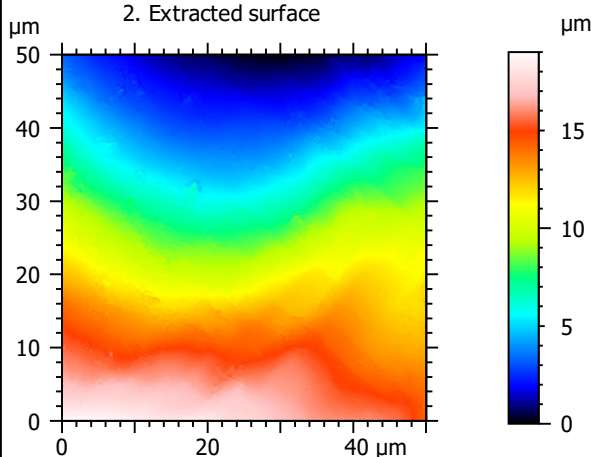
### Identity card

Name:	QTZ3-2_LSM_50x-0.95_20190314_Area2_Topo		
File path:	D:\Data\3Ddata\SSFA\Lithics\Original surfaces\QTZ3-2_LSM_50x-0.95_20190314_Area2_Topo.sur		
Created on:	3/14/2019 4:50:24 PM		
Studiable type:	Surface		
Axis:	X		
Length:	255.5	µm	
Size:	3000	points	
Spacing:	0.08519	µm	
Axis:	Y		
Length:	255.5	µm	
Size:	3000	points	
Spacing:	0.08519	µm	
Axis:	Z		
Layer type:	Topography		
Length:	78.46	µm	
Size:	65531	digits	
Spacing:	0.001197	µm	
NM-points ratio:	0.000 % (0 Pts)		

### 1. Acquired surface

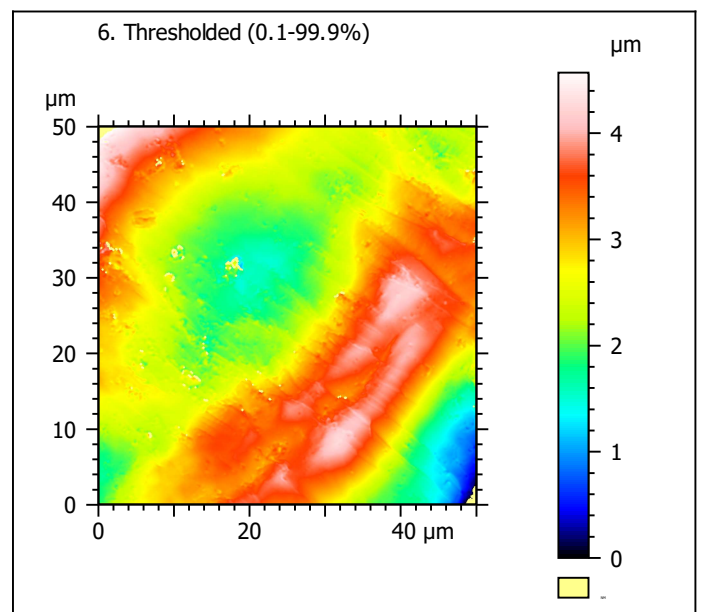
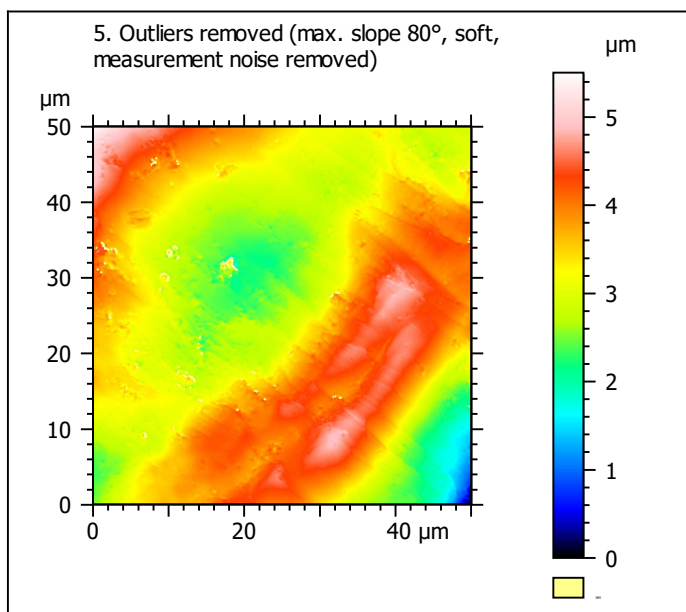
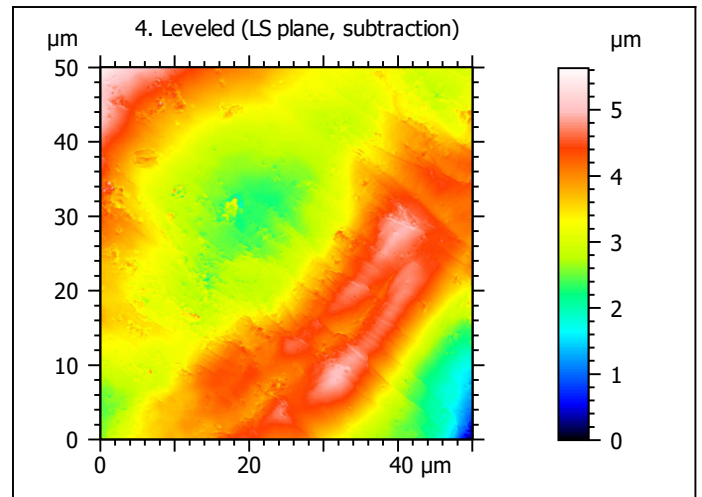
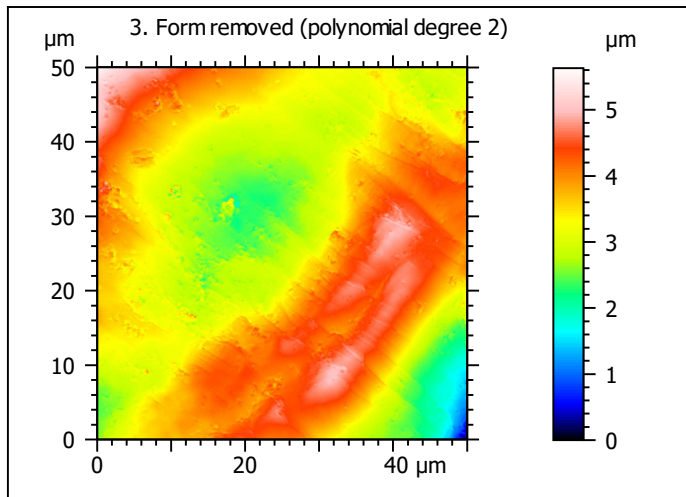


### 2. Extracted surface



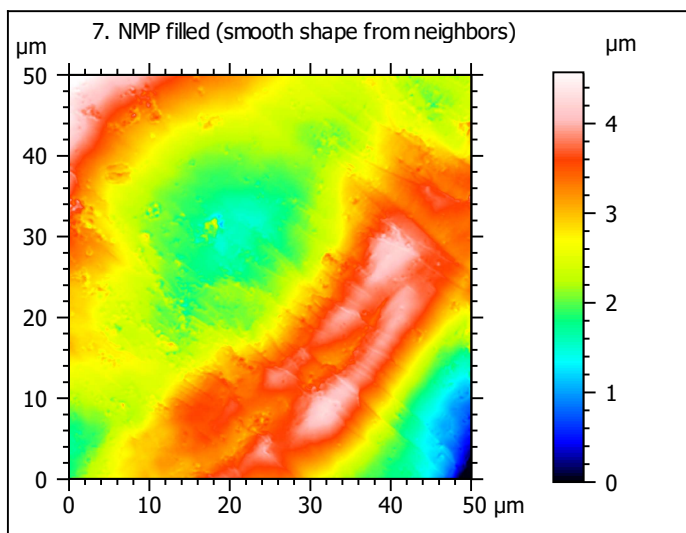
### Identity card

Name:	QTZ3-2_LSM_50x-0.9...opo > Extracted area		
<b>Axis: X</b>			
Length:	50.00	µm	
Size:	588	points	
<b>Axis: Y</b>			
Length:	50.00	µm	
Size:	588	points	
<b>Axis: Z</b>			
Layer type:	Topography		
Length:	19.00	µm	
Size:	15872	digits	
NM-points ratio:	0.000 % (0 Pts)		

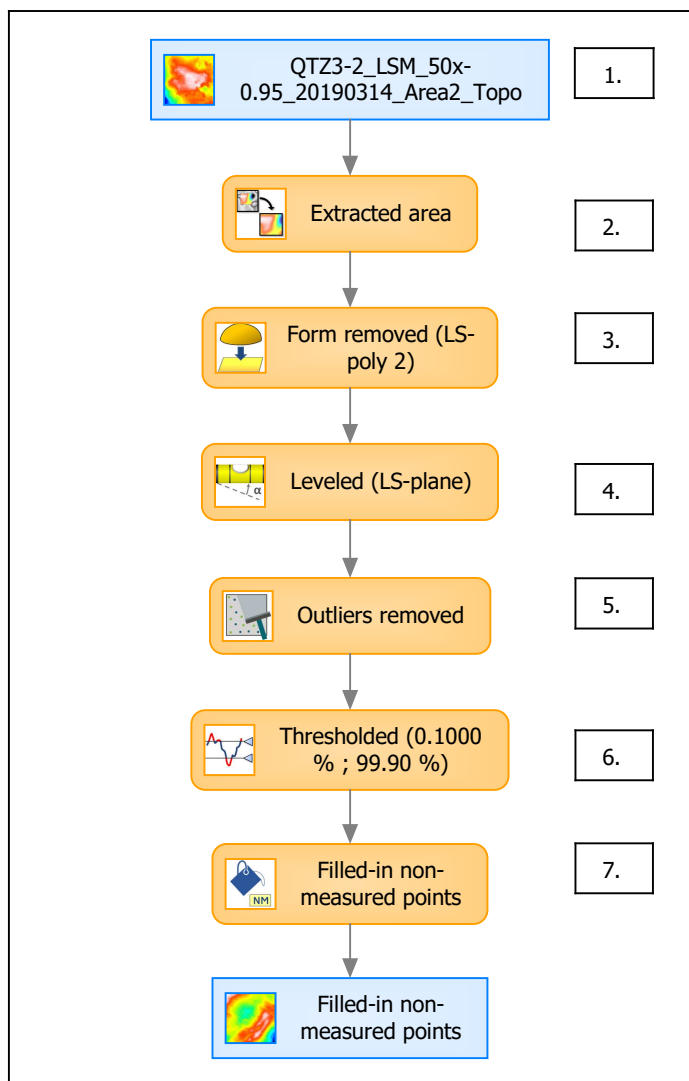


Identity card	
Name:	QTZ3-2_LSM_50x-0.9...e) > Outliers removed
Axis:	Z
NM-points ratio:	0.4136 % (1430 Pts)

Identity card	
Name:	QTZ3-2_LSM_50x-0.9...0.1000 % ; 99.90 %)
Axis:	Z
NM-points ratio:	0.6123 % (2117 Pts)



## B. Summary



### Identity card

Name: QTZ3-2\_LSM\_50x-0.95\_20190314\_Area2\_Topo > Extracted area ...resholded (0.1000 % ; 99.90 %) > Filled-in non-measured points

Studiable type: Surface

#### Axis: X

Length: 50.00  $\mu\text{m}$

Size: 588 points

Spacing: 0.08519  $\mu\text{m}$

#### Axis: Y

Length: 50.00  $\mu\text{m}$

Size: 588 points

Spacing: 0.08519  $\mu\text{m}$

#### Axis: Z

Layer type: Topography

Length: 4.571  $\mu\text{m}$

Size: 3818 digits

Spacing: 0.001197  $\mu\text{m}$

